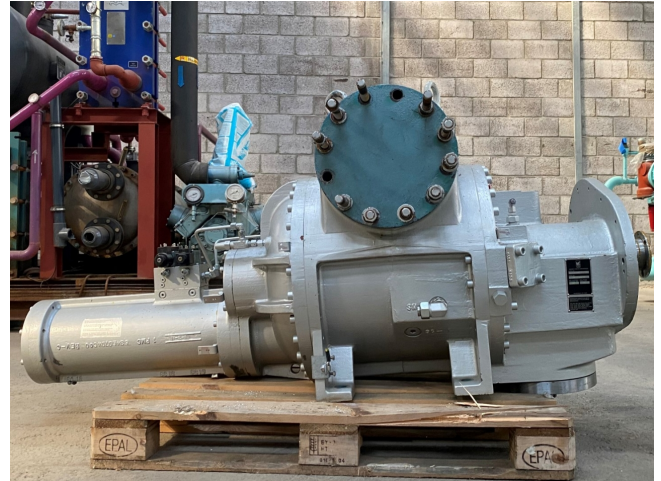


Sabroe SAB 233 E

Specifications

| | |
|--------------------|---|
| Brand | Sabroe |
| Type | SAB 233 E |
| Refrigerant | NH 3 / Freon |
| Electromotor Specs | 50 Hz - 132 kW - 400V - 2983 RPM |
| m3 / h | 2323 (3000 rpm); 2788 (3600 rpm) |
| Weight in kg. | Electric motor: 775kg |
| Sizes | Compressor: 2000X1180x940 electric motor: 1470x900x880 (LxWxH) |



Description

Used Sabroe SAB 233 E

Used Sabroe SAB 233 E open drive screw compressor for NH3 and freon. Nominal capacities at 3600 RPM for NH3:

High stage -10/+35°C: 1826 kW
Booster -40/-10°C: 537kW
With economiser -40/+35°C: 520 kW

*Why choose for HOSBV? We are not only the largest used refrigeration specialist in Europe, but also, we solely deliver our orders after performing an extensive test and an industrial cleaning. If requested we are happy to arrange your logistics.

